

THANK YOU FOR CHOOSING WRIGHT'S!



Drive Thru Menu

OPEN: TUESDAY - SATURDAY 11AM to 8PM or SELL OUT

GENERAL INFORMATION

★ DRIVE THRU ONLY

★ NO PHONES DUE TO CONSTRUCTION

★ LIMITED MENU - SUBJECT TO CHANGE BASED ON AVAILABILITY

★ NO DRINKS DUE TO CONSTRUCTION

★ NO DINE IN AVAILABLE UNTIL FURTHER NOTICE

WANT US TO CATER A LARGER PARTY?

EMAIL US:

catering@wrightsbarbecue.com

OR FILL OUT A FORM ON OUR WEBSITE AND

WE'LL GET BACK TO YOU ASAP:

<https://www.restaurantcateringsystems.com/>

[wrightsbarbecue](https://www.restaurantcateringsystems.com/wrightsbarbecue)

CONTACT US THROUGH SOCIAL MEDIA:



<https://www.facebook.com/wrightsbarbecue>



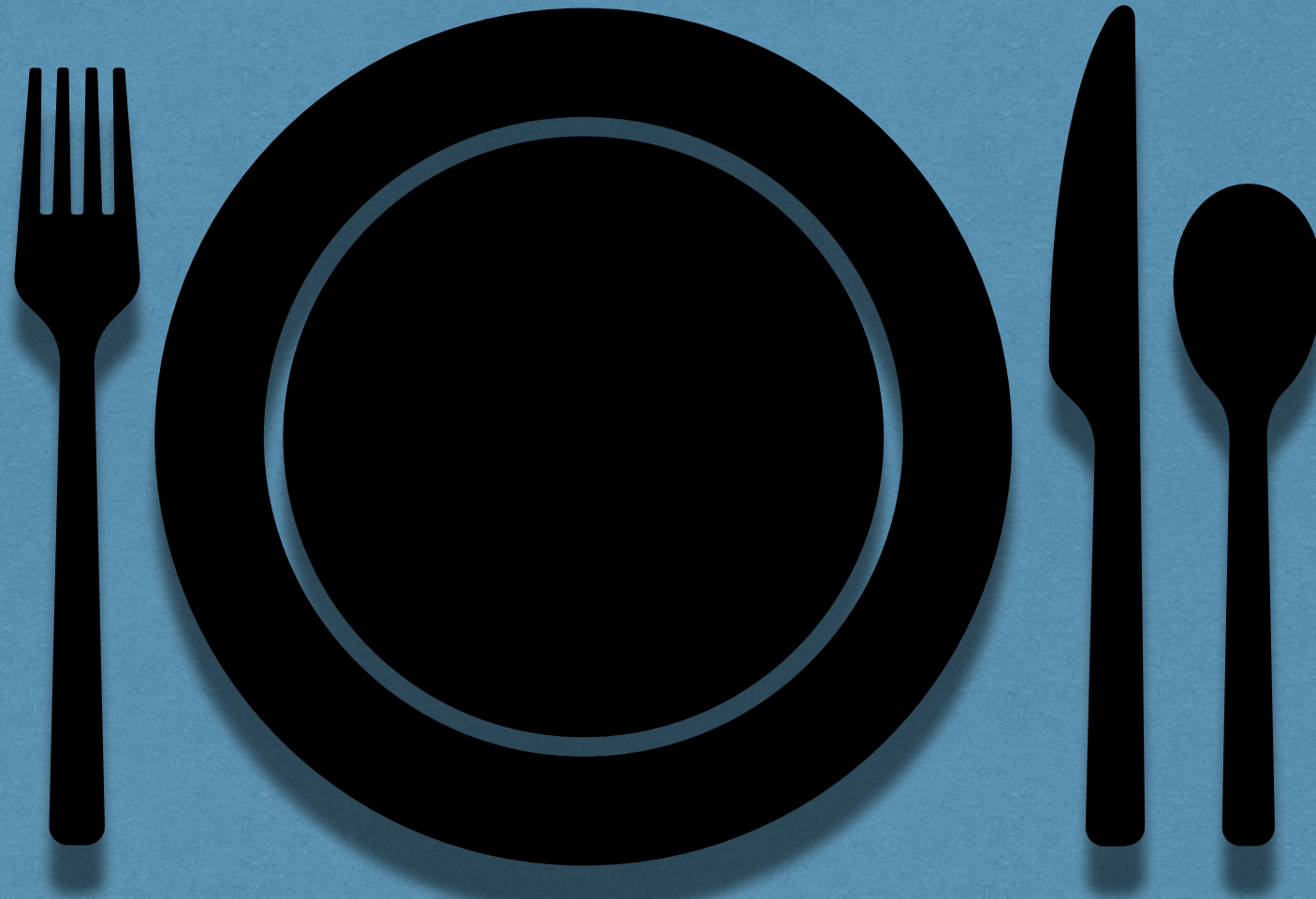
<https://www.instagram.com/wrightsbarbecue/>



OR VISIT US AT THE STORE

SECTION 1

PLATES



1/3 LB PLATES:

1/3 LB OF 1 MEAT, W/ 2 SIDES, & 1 SAUCE

- BRISKET - \$12
- PORK - \$10
- CHICKEN - \$9
- TURKEY - \$11
- SAUSAGE (JALAPEÑO CHEDDAR OR BEEF) - \$ 10
- RIBS (3 BONES) - \$14

1/2 LB PLATES:

1/2 LB OF 1 MEAT, W/ 2 SIDES, & 1 SAUCE

- BRISKET - \$15
- PORK - \$13
- CHICKEN - \$12
- TURKEY - \$14
- SAUSAGE (JALAPEÑO CHEDDAR OR BEEF) - \$ 13
- RIBS (1/2 RACK) - \$18

ADD A BUN TO ANY PLATE
FOR \$0.75

2 MEAT PLATE: - \$16

ANY TWO MEATS, W/ 2 SIDES, 1 SAUCE

- BRISKET - PORK
- CHICKEN - TURKEY
- SAUSAGE (JALAPEÑO CHEDDAR OR BEEF)
- BACON BURNT ENDS
- RIBS (2 BONES)

*TEXAS TRINITY W/ GREEN BEANS AND MASHED POTATOES***TEXAS TRINITY: - \$20**

BRISKET, RIBS (2 BONES), SAUSAGE (JALAPEÑO CHEDDAR OR BEEF), W/ 2 SIDES & 1 SAUCE

SAUCE OPTIONS:

ORIGINAL (SWEET)

SPICY(HOT)

BOLD (TANGY)

RANCH

EXTRA SAUCE - \$0.29**SIDE OPTIONS:***ADD EXTRA SIDES FOR \$1.85*

- CHIPS
- COLESLAW
- POTATO SALAD
- SMOKED BEANS
- GREEN BEANS
- MAC & CHEESE
- MASHED POTATOES
- SIDE SALAD W/ RANCH

01 ON A BUN (SANDWICHES) W/ 1 SIDE

** 1 RAMEKIN OF SAUCE PER MEAL **

ON A BUN OPTIONS: SIDE OPTIONS:

COMES WITH ONE SIDE

1 MEAT - \$9

ANY 2 MEAT - \$11

MEAT OPTIONS:

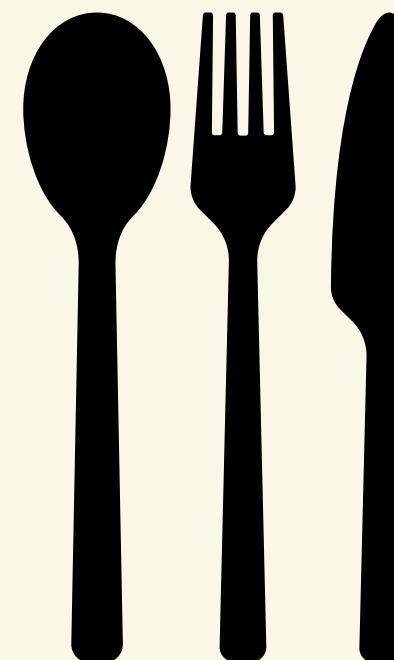
- BRISKET
- PORK
- TURKEY
- SAUSAGE
- CHICKEN

ADD EXTRA SIDES FOR \$1.85

- CHIPS
- COLESLAW
- POTATO SALAD
- SMOKED BEANS
- GREEN BEANS
- MAC & CHEESE
- MASHED POTATOES
- SIDE SALAD W/ RANCH



CBR W/ MAC & CHEESE



SPECIALTY BUNS:

COMES WITH ONE SIDE

- PUMBA - \$12
BRISKET, PORK, AND SAUSAGE
ON A BUN
- CBR - \$10
CHOPPED CHICKEN & BACON,
TOPPED W/ RANCH
- WOOO PIG - \$9
PULLED PORK & SAUSAGE,
TOPPED WITH SLAW

SAUCE OPTIONS:

ORIGINAL (SWEET)

SPICY(HOT)

BOLD (TANGY)

RANCH

EXTRA SAUCE - \$0.29

PUMBA W/ SMOKED BEANS & CHIPS



ENTREES:

- **ROCKET MAN - \$11**
BOWL OF MASHED POTATOES, CHOPPED BRISKET, 2-3 BACON BURNT ENDS *(ADD MAC ON TOP FOR \$1.00)
- **BIG JOHN - \$9**
BOWL OF FRITOS, SMOKED BEANS, CHOPPED BRISKET
- **LOADED MAC & CHEESE - \$8**
BOWL OF MAC & CHEESE, TOPPED WITH PULLED PORK *(UPGRADE TO BRISKET FOR \$1.00)

Bacon Burnt EndsSALADS:

- **HOUSE- \$10**
1 CHOICE OF MEAT (CHICKEN, PORK, TURKEY, SAUSAGE), SPRING MIX LETTUCE, SHREDDED CHEESE, ONIONS, TOMATOES, PICKLES, & RANCH
- **HOUSE W/ BRISKET - \$12**
SPRING MIX LETTUCE, SHREDDED CHEESE, ONIONS, TOMATOES, PICKLES, & RANCH
- **CHICKEN BACON RANCH - \$11**
SPRING MIX LETTUCE, SHREDDED CHEESE, ONIONS, TOMATOES, PICKLES, CHOPPED CHICKEN, BACON BURNT ENDS AND RANCH

SAUCE OPTIONS:

ORIGINAL (SWEET)

SPICY(HOT)

BOLD (TANGY)

RANCH

EXTRA SAUCE -\$0.29KIDS MEALS:EACH MEAL COMES WITH ONE MEAT CHOICE AND ONE SIDE

- **LITTLE KIDS PLATE - FREE**
(SMALL PORTION FOR KIDS THAT PICK AT FOOD)
- **BIG KID SANDWICH - \$4.50**
(LARGER PORTION ON A BUN FOR KIDS)

MEAT: PORK, CHICKEN, TURKEY, BEEF SAUSAGESIDES: MASHED POTATOES, MAC & CHEESE, GREEN BEANS, SMOKED BEANS, CHIPSRocket Man with Mac & Cheese

01 WEEKEND SPECIALS

THURSDAY:

BRISKET BURGER + 1 SIDE

HALF POUND BURGER W/
CHEESE, LETTUCE, TOMATO,
ONION AND HOMEMADE
PICKLES

\$12



FRIDAY:

PRIME RIB + 2 SIDES

1/2 LB
\$18

OR

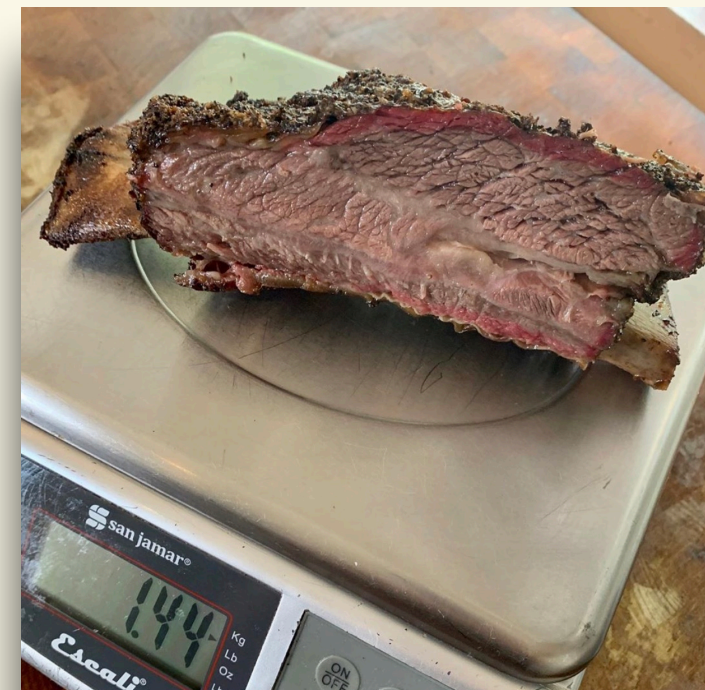
1 LB
\$35



SATURDAY:

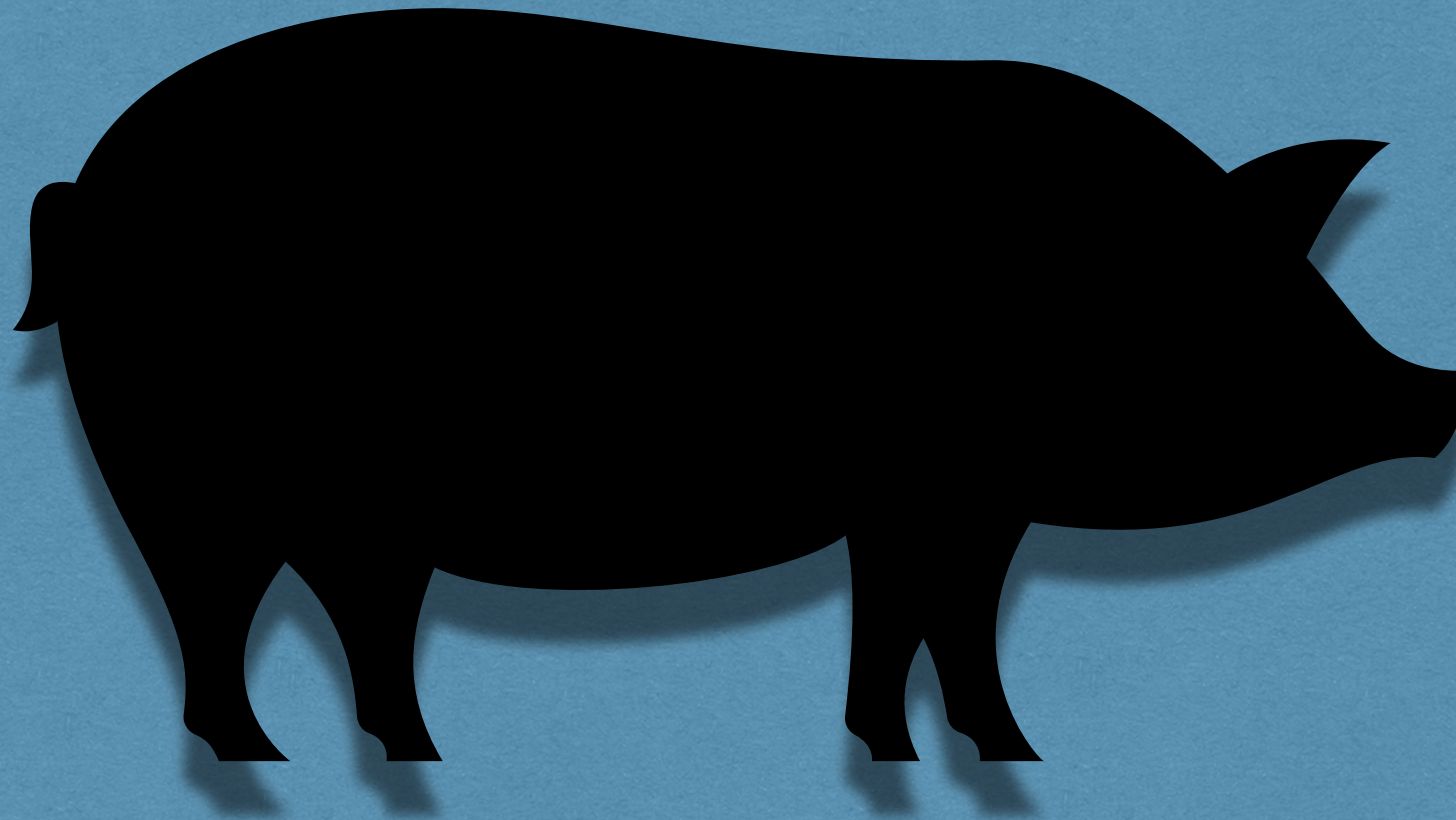
BEEF RIB + 2 SIDES

ONE GIANT RIB BONE
\$33



SECTION 2

BULK ORDERING



ALL SAUCE WILL COME A-LA-CARTE

MEATS BY THE 1/4 LB:

- BACON BURNT ENDS - \$8
- SAUSAGE (JALAPEÑO CHEDDAR OR BEEF) - \$4

BY THE LINK

MEATS BY THE 1/2 LB:

FEEDS 1-2 PEOPLE

- BRISKET - \$12 - PORK - \$7.50
- SAUSAGE (JALAPEÑO CHEDDAR OR BEEF) - \$8.50
ABOUT 2 LINKS
- CHICKEN - \$7 - TURKEY - \$8
- WINGS (NAKED OR SAUCED) - \$5
- BACON BURNT ENDS - \$14.50

MEATS BY THE 1 LB:

FEEDS 2-4 PEOPLE

- BRISKET - \$22 - PORK - \$15
- SAUSAGE (JALAPEÑO CHEDDAR OR BEEF) - \$17
ABOUT 4 LINKS
- CHICKEN - \$14 - TURKEY - \$16
- WINGS (NAKED OR SAUCED) - \$10
- BACON BURNT ENDS - \$29

RIBS:

PORK SPARE RIBS

- HALF RACK - \$15
5-6 BONES
- FULL RACK - \$30
10-12 BONES



SAUCE OPTIONS:

- ORIGINAL (SWEET)
- SPICY (HOT)
- BOLD (TANGY)

SIDE OPTIONS:

- MAC & CHEESE
- HONEY BUTTER GREEN BEANS
- MASHED POTATOES
- SMOKED BEANS
- POTATO SALAD
- COLESLAW

SIDE SIZES:

- 1/2 PINTS - \$3.50 **FEEDS 1-2**
- PINTS - \$7 **FEEDS 2-3**
- QUARTS - \$12 **FEEDS 3-5**

SAUCE SIZES:

- RAMEKIN (2OZ) - \$0.29
- 1/2 PINT (8OZ) - \$2.36
- BOTTLE (16OZ) - \$6.40

02 GROUP MEALS

SAUCE INCLUDED WITH MEALS

FAMILY PACK:



FEEDS 4

COMES WITH 1LB OF MEAT, 2 QUARTS SIDES, 4 BUNS, & 1/2 PINT OF SAUCE.

RIB FAMILY PACK - \$50

FEEDS 4

COMES WITH 1 RACK OF RIBS, 2 QUARTS SIDES, & 1/2 PINT OF SAUCE.

PITMASTER TRAY- \$78

FEEDS 6-8

COMES WITH 1LB BRISKET, 1LB PORK, 1/2 RACK OF RIBS, 3 SAUSAGE LINKS, 1/4 BACON BURNT ENDS, 1 BOTTLE OF SAUCE (*BUNS AND SIDES NOT INCLUDED*)

PITMASTER PACK- \$98

FEEDS 6-8

COMES WITH 1LB BRISKET, 1LB PORK, 1/2 RACK OF RIBS, 3 SAUSAGE LINKS, 1/4 BACON BURNT ENDS, 1 BOTTLE OF SAUCE, 8 BUNS, 2 QUARTS OF SIDES

MEAT OPTIONS:

BRISKET - \$43

PORK - \$36

CHICKEN - \$36

TURKEY - \$37

SAUSAGE - \$36



PITMASTER TRAY

SIDE OPTIONS:

MAC & CHEESE

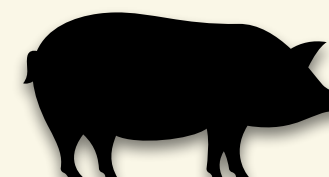
GREEN BEANS

SMOKED BEANS

MASHED POTATOES

COLESLAW

POTATO SALAD



SAUCE OPTIONS:

ORIGINAL (SWEET)

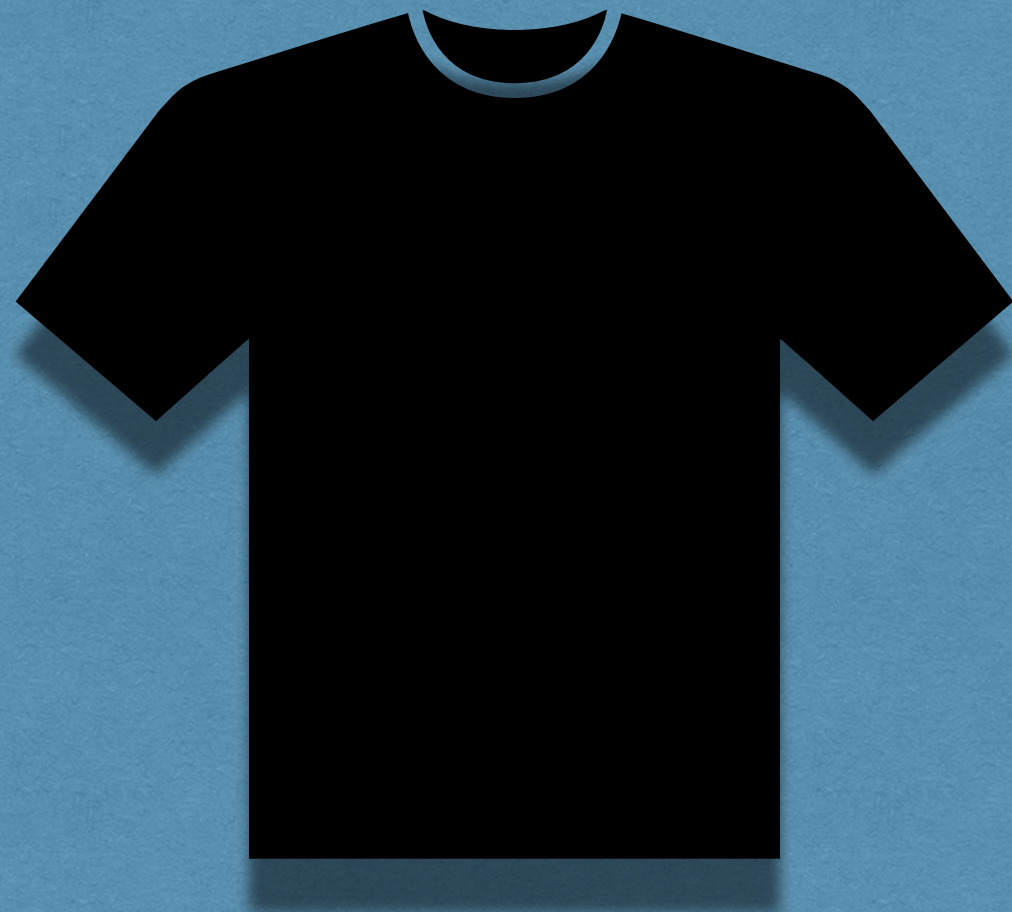
SPICY (HOT)

BOLD (TANGY)



SECTION 3

MERCHANDISE



03

MERCHANDISE

CHECK AVAILABILITY AT STORE

WRIGHT'S CREST TEE - \$ 20



BACK



FRONT

WRIGHT'S COW TEE - \$ 20



FRONT GRAPHIC ONLY

WRIGHT'S LOGO TEE - \$ 20



BLACK
OR
RED

TRUCKER HAT- \$ 20



DAD HAT- \$ 20



WRIGHT'S SAUCE BOTTLE - \$7



WRIGHT'S MEAT RUB - \$10

